



SPOTLIGHT

Over a decade of going goey September 2007



How time flies when you're having fun! Hard to believe that it's been **10 years** since we launched the very first common GUI interface for GuardIEn – and so, not being ones to miss an excuse for a party, we thought it would be nice to host some celebrations at the Edge user group meeting to wish GuardIEn GUI a very happy 10 years young. We're looking forward to seeing you...



This year's Edge EMEA conference is being held at CA's offices in Ditton Manor between September 30th and October 2nd and is set to be one of the most interesting conferences for a long time. IET are contributing to the full and varied programme of events during the conference...

1 Vendor Exhibition

Our regular exhibition stand in the vendor area where you can see demonstrations of all the latest releases our products, including the xTrace tracing tool from our recently announced partnership with Meisner IT, Denmark. The team are also on hand to answer any questions you may have about GuardIEn deployment or usage and to discuss our future plans and developments - just come and ask!

2 genIE, ObjectList+ & IETeGUI Labs

Try your hand at enhancing a CA Gen GUI application using IETeGUI. Experience the powerful action diagramming add-on and direct encyclopaedia editing capabilities of genIE and see how this can improve developer productivity. Take a look at a Gen model in an entirely new way using Object List+, which provides an intuitive and sophisticated encyclopaedia browsing and compare facility. You can explore any or all of these products in the Lab.

Scheduled for Tuesday 2nd October 11:00-12:45

3 Presentation: Modernising your Gen GUI

In 2006 IET embarked on a project to enhance our user interface with an aim of improving user productivity and ease of use. The objective was to implement this with low cost and high productivity - we could not afford to re-write the GUI outside of CA Gen or make extensive use of third party controls or extra coding. This presentation will provide a case study of the changes that were implemented, highlighting the tools and techniques that were used.

Scheduled for Tuesday 2nd October 08:30-09:15

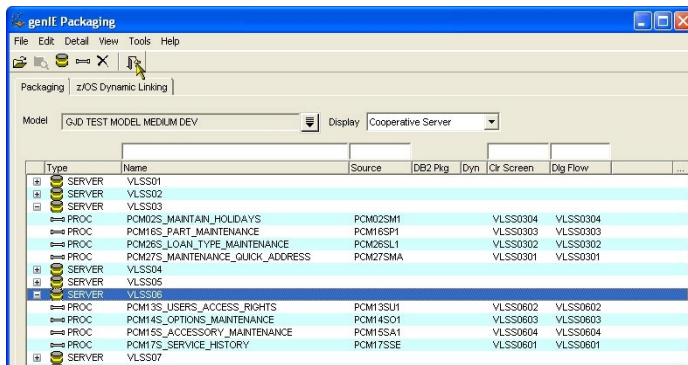
4 GuardIEn User Group Meeting

As usual we will be holding a **GuardIEn User Group** meeting where we will present our exciting plans for the future.

Scheduled for Tuesday 2nd October 08:00-08:30



genIE Packaging, introduced in GuardIEn 7.6, has been designed to simplify and speed up Load Module Packaging and setting of z/OS Dynamic Linking Properties.



genIE Packaging allows you to add, amend and delete load module packaging, operations libraries, source member names and associated packaging properties.

You can also amend Model, Business System and RI Trigger Defaults, Code Generation Libraries, DB2 Bind Options and Package Lists.

Bulk updates are also possible, allowing you to make similar changes to many packaging objects at the same time, such as changing all server load modules from 'GD*' to 'GU*'. You can also preview your changes before committing them to the model.

The z/OS dynamic linking facility is used to review and update the dynamic linking properties of Action Blocks and Procedure Steps. It displays a matrix indicating the dynamic linking property for each object across multiple models. The properties can be amended for a single object or multiple objects with one click.

The facility also includes special support for updating r7.6 DLL compatibility settings without updating the object timestamp to suppress unnecessary regeneration of modules when converting to CA Gen r7.6.

Why not come along to the IET stand during conference time and have a look at this new addition to the genIE suite.



A customer writes...

Dearest Mr Guru

Yesterday (well it was Monday) I had made a lot of changes to my Development model and was wondering if there was a quick and easy method of generating and installing all the impacted changes...currently I am never quite sure I've rebuilt everything properly which can, and often does, cause problems.

Most Kind

The Flying Dutchman

Guru responds...

Dear Mr. Dutchman

You are already on the correct path to wisdom by asking me such a pertinent question. From your Development Update Content screen you can select the **Auto Impact** option to automatically assess the impact of all the Action blocks/Procedure steps currently scoped.

From this sophisticated analysis based on how the objects have changed, GuardIEn will then build you a complete list of the impacted objects...indicating in each case whether it requires regeneration and/or installation.

As an example, if you changed the import/export views of an Action Block, GuardIEn would automatically request a regeneration of any Action Block/Procedure step that directly called that module to ensure correct view-matching.

So I hope that helps you generate a feeling of inner peace and allows you to install an aura of greater confidence and pleasure.

Guru

Guru thanks everyone for their questions, but reserves the right to meditate at the Edge conference if the going gets tough.



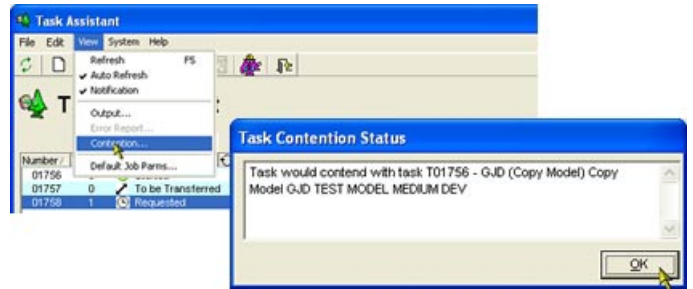
Ah well. Another edition over – we hope you have an enjoyable conference. We certainly intend to. Let us know if you have any ideas for future articles. Bye.

To ensure you don't miss future copies of SPOTLIET why not send us a blank email at spotliet-subscribe@iet.co.uk



The GuardIEn Task Dispatcher contains sophisticated rules to ensure that a Task will not execute concurrently with another Task that it would contend with for encyclopaedia resources. In effect

it assesses any CA Gen tasks submitted against the Encyclopaedia concurrency matrix and **prevents** activity conflicts that would otherwise cause failures and impact developer productivity – for example an Upload cannot run concurrently with a download from the same Model.



If a Task remains in the 'Requested' state, you can find out what Task(s) it is waiting for by selecting the Task and then using the **View->Contention** function. The selected Task has to be in the Requested or On Hold states.

DID YOU KNOW? AUTO-SCOPE WIZARD

The Auto Scope Wizard available from the Object Set Migration/Adoption facility within GuardIEn provides a very easy way of searching for and identifying candidates for adoption...across all the models under your control.

When the search is set to Name/Type, it will check each model for an object that matches the selected object's name and type. If an object is found with differing ancestry, it will populate the target model with a 'T' indicating that an Adopt is required. When the search is set to 'Ancestry', it populates the target model with a 'T' when it has the same ancestry as the target model, indicating that a migrate is possible.

It can therefore help model administrators quickly and effectively locate ancestry issues that can so impact upon development work.



If you are planning to use the CA Gen r7.6 Priority Enhancement for z/OS DLL Compatibility support, you should will be aware that this involves a number of significant changes to the way that CA Gen modules are installed. GuardIEn has been enhanced to provide support for the new approach for module compilation when compatibility is required.

Formal support for the changes in the CA Gen 7.6 PE is now available in GuardIEn release 7.6 SP2, which you can download from the IET website at www.iet.co.uk.

And finally...

...we'll be holding a special celebration of 10 years of IET's common GUI interface for our products at our exhibition stand at the EMEA conference. We'll look forward to seeing you...



The IET Team