



## Intelligent Editing for CA Gen

*genIE enhances the action diagramming capability of CA Gen. genIE is available as both a toolset Plug-in and a direct editor for the encyclopaedia.*

*genIE Direct allows you to directly edit action diagrams on the encyclopaedia and thus rapidly implement fixes without needing to download a subset. Examples of edits that can be performed include changing text & numeric values, copy & move statements, change view mapping, add, modify and delete views and cross-copy statements from other action diagrams.*

*genIE Plug-in enhances the Gen action diagramming tool. It provides a range of powerful functions and utilities that improve developer productivity. Examples include tools for generating statements, calculate view sizes, re-order views, delete unused views, search for and replace text, change an action block's business system and more.*

*genIE Packaging allows you to view and modify load module packaging, dynamic linking properties and business system defaults using a powerful and intuitive user interface.*

## genIE Direct

**genIE Direct** allows you to directly edit action diagrams on the CA Gen encyclopaedia. You can rapidly implement a fix or minor enhancement to your application, saving time, cost and reducing encyclopaedia model contention because download & uploads are no longer required.

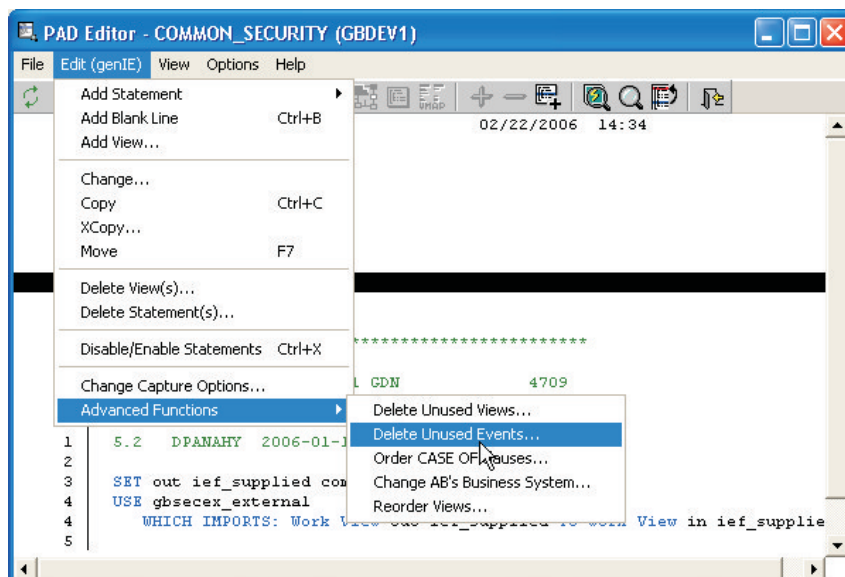
Whilst genIE Direct does not replace the Gen toolset for substantial development tasks, often developers need to make simple fixes to action diagrams where the cost & time of the download greatly exceeds the time required to implement the change. In these situations, genIE Direct will allow the changes to be completed significantly faster and with much reduced encyclopaedia resource consumption and contention.

With genIE Direct you can:

- ◆ Add, modify and delete views.
- ◆ Add statements.
- ◆ Modify statements, for example, changing literal or numeric values, NOTES, operators, ESCAPE & NEXT pointers, subscript references, referenced views, commands and exit states.
- ◆ Modify USE statement view mapping.
- ◆ Copy, Move and Delete statements.
- ◆ X-Copy statements and views from other action diagrams in any model, with support for automatic view creation. X-Copy also supports powerful object substitution, for example, replacing one entity type with another.
- ◆ Enable / Disable statements.
- ◆ Advanced functions for changing the owning business system for action blocks, deleting all unused views or events and ordering CASE statements.

genIE Direct can also be used with GuardIEn so that changes to action diagrams are versioned by GuardIEn and then the impacted objects automatically included for implementation.

genIE Direct validates that the object is not checked out and that the user has the necessary authority to perform the update. It also locks the model for the brief duration of the update to ensure model integrity.



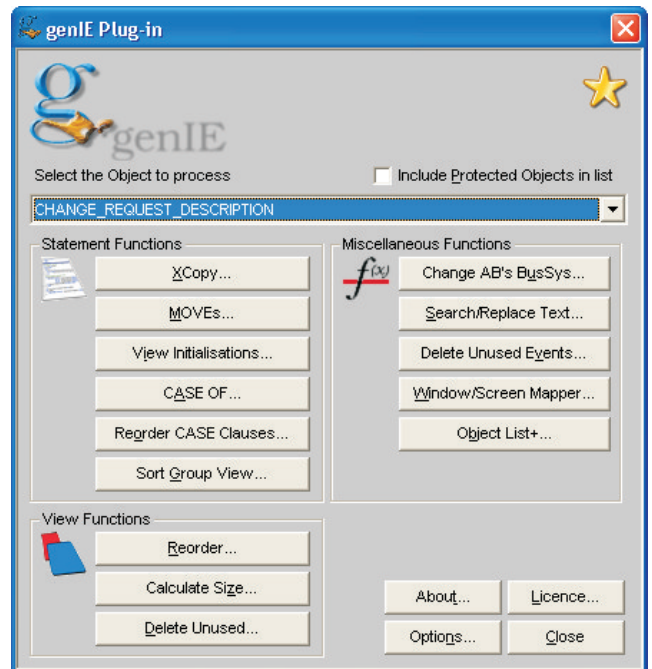
genIE Direct is available for both the host (MVS) and client/server encyclopaedias. For the host ency, genIE utilises its own update API and model locking facilities. For the CSE, genIE Direct requires the Gen Encyclopaedia Update API.



## genIE Plug-in

genIE Plug-in enhances the CA Gen action diagramming tool by providing a range of powerful functions and utilities that automate repetitive or time-consuming tasks.

- ◆ **X-Copy** provides a cross-copy function allowing you to select one or more statements in any action diagram from any model in the encyclopaedia and copy them into an action diagram in your CA Gen toolset.
- ◆ **Generate MOVE Statements** quickly creates MOVE statements. You can individually map the desired views, but genIE provides a powerful feature that automatically calculates the mapping based on similar names.
- ◆ **Generate View Initialisation Statements** creates statements to initialise local and export views.
- ◆ **CASE OF Creator** allows you to quickly create CASE OF statements, for example, CASE OF EXITSTATE generation that identifies all possible returned exit states from a USEd action block.
- ◆ **Reorder CASE Clauses** rapidly re-orders the CASE clauses making the PAD more readable.
- ◆ **Sort Group Views** generates the statements to sort a group view for any platform.
- ◆ **Reorder Views** rapidly orders the action diagram views into an alphabetic sequence. This makes it much faster to locate a view, especially when tracing the action diagram.
- ◆ **View Size Calculator** produces a report detailing the size required for your views so that you can easily check if you have used more than 32k on an export view and what storage individual views are using.
- ◆ **Delete Unused Views** allows you to quickly delete views that are not used in the action diagram. This tidies up the action diagram and also results in more efficient generated code.
- ◆ **Change Business System** allows you to quickly transfer an action block to another business system.
- ◆ **Search/Replace Text** allows you to quickly change text literals from one value to another. Enter the desired old and new text values and search for occurrences, either in the selected object or across all objects in the subset.
- ◆ **Delete Unused Events** identifies events that can be safely deleted.
- ◆ **Window/Screen Mapper** verifies that all export views are mapped to import views in the screen and window designer.



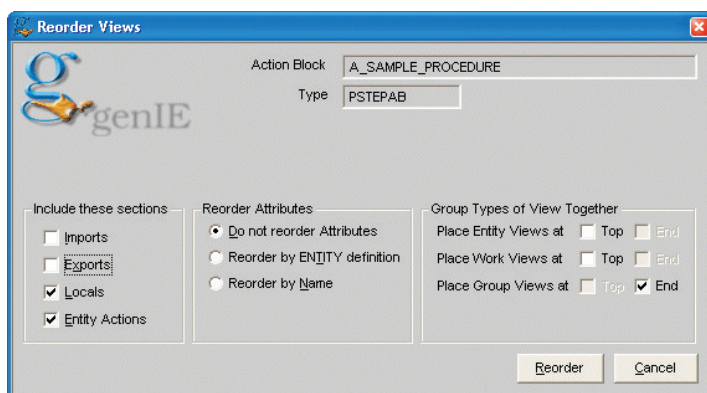
## Summary

### genIE Direct

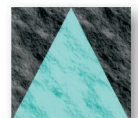
- ◆ Allows rapid changes to be made without download/upload
- ◆ Eliminating downloads reduces contention on the models and CPU consumption, hence reduces cost of development
- ◆ Integration with GuardIEn ensures changes are correctly versioned and controlled
- ◆ X-Copy ensures fixes are more accurately applied to multiple models and facilitates re-use of commonly used statements across models

### genIE Plug-in

- ◆ Statement generation features reduce effort and speed up development
- ◆ View re-ordering speeds up testing and development time and can result in more efficient generated code
- ◆ Deleting unused views results in more efficient generated code
- ◆ Search & Replace text allows rapid changes to text literals across multiple objects



**For more information, call**  
**+44 1225 863060**  
**e-mail [information@iet.co.uk](mailto:information@iet.co.uk),**  
**or visit us at [www.iet.co.uk](http://www.iet.co.uk)**



**Information Engineering  
Technology**